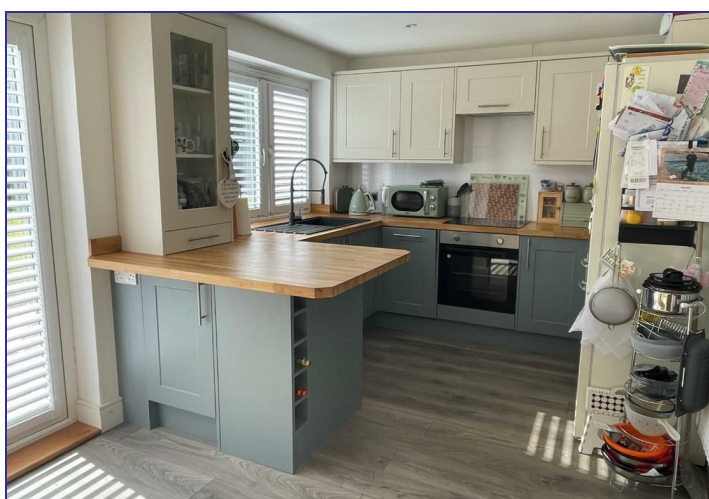




91 Quantock Drive, Ashford, Kent, TN24 8QP
Price £330,000

GOULD
HARRISON

A very well presented end of terrace home occupying a corner plot in a popular residential location. This lovely home comprises an entrance hall, sitting room, modernised kitchen/dining room, three bedrooms and bathroom/WC. Tastefully decorated, the property also benefits from gas central heating, double glazing, garage and gardens to side and rear. Highworth Grammar School is just a short walk whilst Ashford town centre and mainline train station are also easily accessible .



Composite Casement Door

Through to:

Entrance Hall

Stairs to first floor, door to:

Sitting Room 13'0 x 13'7 (3.96m x 4.14m)

Double glazed window to front, radiator, under stair storage cupboard, television aerial point.

Kitchen/Dining Room 16'3 x 9'2 (4.95m x 2.79m)

Double glazed window & French doors opening to the rear garden. Generous range of fitted wall and base units, induction hob with extractor hood lighting above, low level electric oven, composite sink with mixer tap and pull out spray, washer/dryer, dishwasher, breakfast bar, glass fronted display cabinets. downlighters, under stairs storage cupboard.

First Floor:

Landing

Doors to:

Bedroom One 9'1 x 11'9 (2.77m x 3.58m)

Double glazed window to rear, radiator.

Bedroom Two 9'1 x 12'2 (2.77m x 3.71m)

Double glazed window to front, radiator.

Bedroom Three 6'8 x 8'7 (2.03m x 2.62m)

Double glazed window to front, radiator.

Bathroom/WC

Modern white suite comprising panelled bath with mixer tap and mains shower over, low level WC, pedestal wash basin, chrome heated towel rail, frosted double glazed window to rear.

Rear Garden

Enjoying a secluded feel the rear garden is mainly laid to lawn with raised decked seating area, part panelled enclosed fencing, side gated access.

Garage

In block to the rear.

Tenure

Freehold.

Services

All main services connected.

Council Tax

Ashford Borough Council Tax Band: C.

